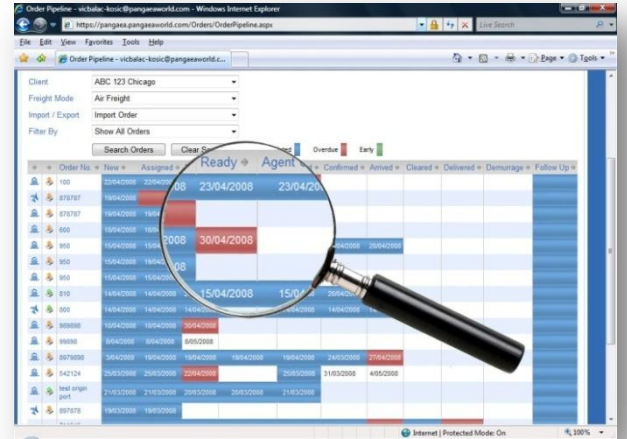


Manage the status of your orders at a glance!

Order Pipeline

Pangaea's Order Pipeline feature is unique in the sense that it provides freight forwarders, importers and exporters with a color-coded status snapshot of their orders.

Within an instant, it is possible to see if the progress of individual orders is on target to meet key timing milestones. When they are, the milestone is coded as 'blue'. Where there is a problem, it is either highlighted in 'red' to alert you of a late arrival or 'green' to alert you of an early arrival. Often times, early arrivals are just as costly and cause as many problems as late arrivals.



There is no need to worry. You don't need to be logged into Pangaea to be aware of a problem situation. When a problem is detected, Pangaea automatically notifies everyone concerned by email.

At the center of the Pangaea Order Pipeline beats an intelligent heart we call Configurable Business Logic. Within this logic is defined what constitutes early or late arrival on milestones and as soon as Pangaea detects something's not right, Pangaea springs into action.

With Pangaea it is finally possible to make promises as to when a shipment will arrive at the door. If something in the freight process goes astray, Pangaea quickly responds and provides you with the data to manage the expectations of the people that rely on you for their delivery information.

The key BENEFITS that the Pangaea Order Pipeline offers are:

1. In an instant, see how your orders are tracking to milestones

Blue means all is well. Red means it's running late. Green means someone is about to get an unplanned surprise and mightn't be ready for it. Act now!

2. View only the orders that you WANT to see

Filtering of your orders is available through a simple drop down offering views of All Orders, Overdue Orders, Early Orders, Managed Orders, Overdue Managed Orders and Early Managed Orders